

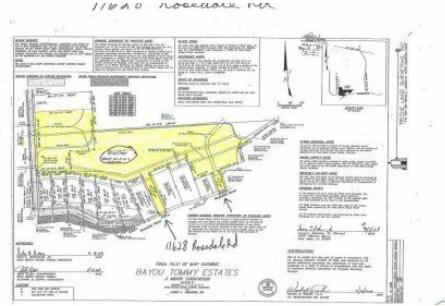
11628 Rosedale Rd
Port Allen, LA 70767



LOGO COMING
SOON

Powered by homes.theadvocate.com

MLS# 2019002065



\$422,500

Tract CJ3C1C Contains 8.452 Acres with approximately 1760 ft of water frontage in the Cocodrie Canal with water access to Bayou Chalpin and Bayou Choctaw to the Intracoastal Water Way. Two land access roads by Bayou Tommy Lane (completed) and East Acadian Lane with Bridge under construction. Zoned AG-3 with no mobile homes allowed. WBR Water & Gas, Entergy electric and cable available. This land is currently sub dividable and can be re-zoned per parish ordinance. Great Family lot, small farm or hydroponic lot. See parish approved map.



Skipper Grady
Phone: (225) 505-2856
Coldwell Banker ONE

For full listing details, please scan:

