

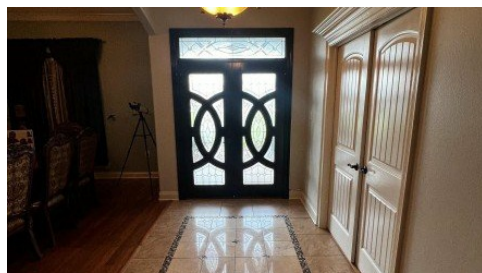
**257 Longdale Drive**  
Schriever, LA 70395



**LOGO** COMING  
SOON

Powered by **homes.theadvocate.com**

**MLS# 2024012418**



**\$750,000**

**5 Bedrooms | 3 Bathrooms | 3,793 Sqft**

The perfect dream home for you and your family! A beautiful home located on a CORNER LOT in Ardoyne Subdivision off of Highway 311. This home features an ample amount of space inside and outside for entertaining and/or family activities. A LARGE fenced in backyard for a future pool and backyard retreat! Beautiful arches in the entryways of the home. Double tray, scalloped ceilings in the formal dining room. The kitchen features custom wood cabinets, granite countertops with a bar, a 5 burner gas cooktop with a custom pot fill built into the backsplash, a separate double oven, and a movable island. Refrigerator to remain. This home has all large rooms with a Jack and Jill bathroom connecting two of the five bedrooms. The master en suite also has a custom tiled and multi-headed shower, a jetted tub, double walk-in closets with a HUGE shoe area, and a gorgeous TRIPLE tray ceiling! There is a second bedroom en suite that has a large custom tiled walk-in shower and closet. This home is fully handicapped accessible. The large office can be converted into a bonus room if need be. Coming into the home from the garage, there is an additional half bathroom outside of the laundry room. This home also includes a security system, surround sound speakers throughout the home and a standalone, electric fireplace to remain. TWO brand new



**Desire Curole**

Phone: (985) 709-2455

**KELLER WILLIAMS REALTY BAYOU P**

For full listing details, please scan:

