

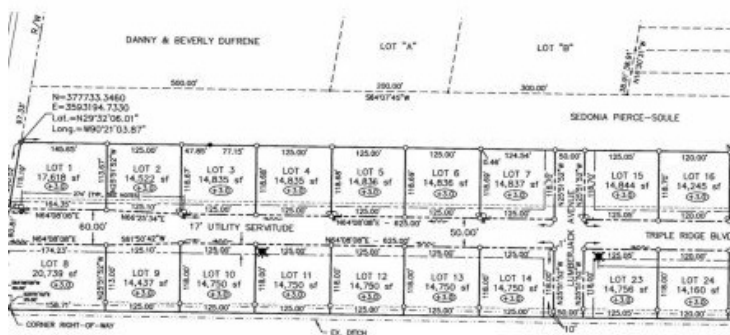
## Lot 8 Triple Ridge Blvd Cut Off, LA 70345



LOGO COMING  
SOON

Powered by [homes.theadvocate.com](https://homes.theadvocate.com)

MLS# 2023006364



# 1204240

**\$66,364**

Welcome to our selection of lots for sale in the highly desirable Triple Ridge Subdivision off Hwy 3235 in Cut Off, LA. You can build your dream home and create the perfect living space for you and your family. We have a variety of lots available to suit your needs and preferences, all of which offer the opportunity to design and build the home of your dreams. These lots feature fiber optic internet and under ground electrical.



**Timothy Houk**

Phone: (225) 301-7467

Keller Williams Realty Red Stick Partners

For full listing details, please scan:

