

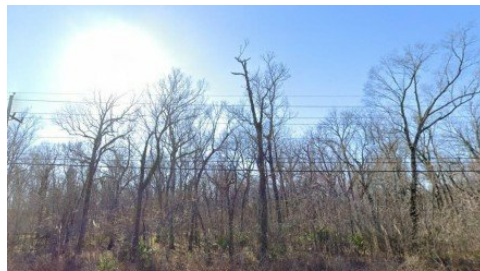
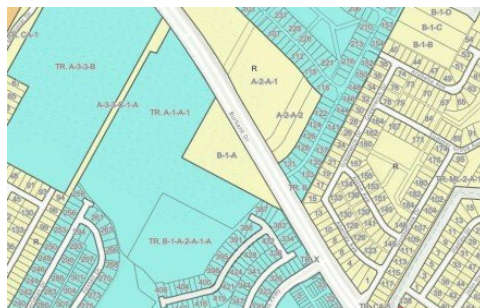
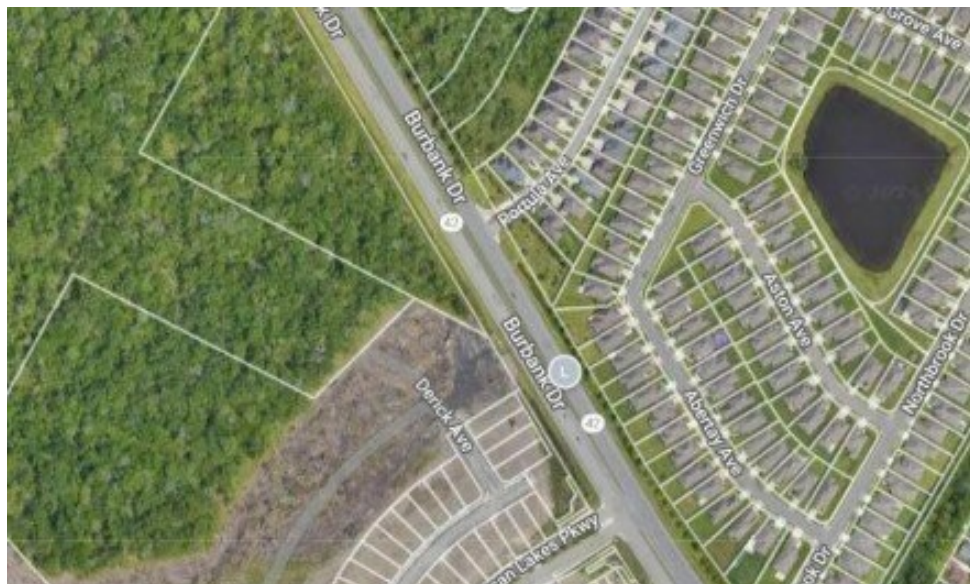
B-1-a Burbank Dr
Baton Rouge, LA 70820



LOGO COMING
SOON

Powered by homes.theadvocate.com

MLS# 2024019467



\$550,000

Great visibility on Burbank Drive with 1028 Feet Frontage. Located in a high growth corridor with residential and commercial developments already established. Property is zoned Rural, triangular in shape, Flood Zone is AE. Call for more information on this 5.489 acre tract.



Aimee Blount
Phone: (225) 324-8485
RE/MAX Professional

For full listing details, please scan:

