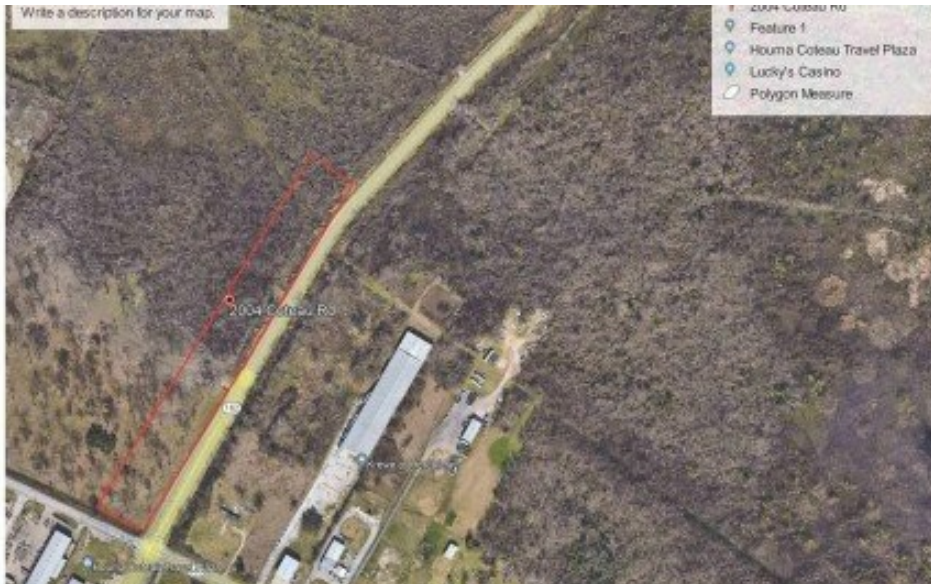


2004 Coteau Rd
Houma, LA 70364

 **LOGO** COMING SOON

Powered by homes.theadvocate.com

MLS# 2023017879



COMMERCIAL
* 4 tracts available
* Can be bought as one
* Each tract is at least
* Corner tract is 13.14
* Convenient for gas sta
* Located in Opportu

\$335,000

Commercial or industrial corner located at Coteau Road and Hwy. 182. 13.14 acres of raw. Located in the heart of the Energy Corridor between Port Fourchon and Lafayette, this property is 5.5 miles south of US Hwy. 90 at the Hwy. 182 exit in Raceland and 6.5 miles from US Hwy 90 at the Hwy 24 exit in Gray. The entire tract is located within a Federal Opportunity Zone Program area. Front of the property is in flood zone X. This lot has over 2, 000 linear feet frontage combined on Hwy 182 and Coteau.



Hank Babin

Phone: (985) 804-9991

KELLER WILLIAMS REALTY BAYOU P

For full listing details, please scan:

