

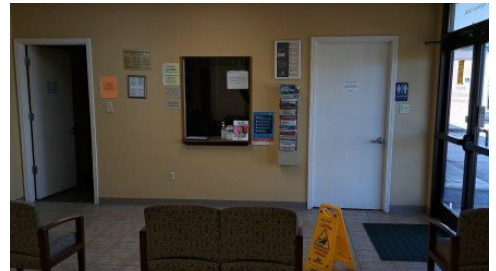
**25073 Hwy 1**  
Plaquemine, LA 70764



**LOGO** COMING  
SOON

Powered by **homes.theadvocate.com**

**MLS# 2024019568**



**\$475,000**

**7,400 Sqft**

This space could serve as a medical office, or as office or industrial space. The building is divided into three office suites. The first is a 3800 SF medical office, furnished, with waiting room, seven examination rooms, conference room, break room, and offices. The other two suites are 1800 SF each. One had been a pharmacy. The other is ready to build out to a tenant's specifications. There is a twenty-two-space parking lot. Signage on HWY 1.



**Morgan Allison**

Phone: (225) 494-5070

Keller Williams Realty-First Choice

For full listing details, please scan:

