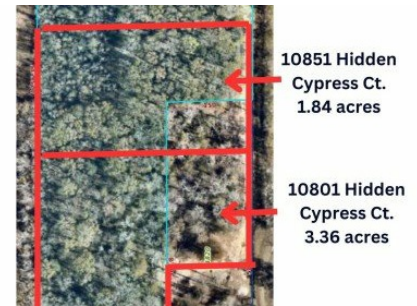
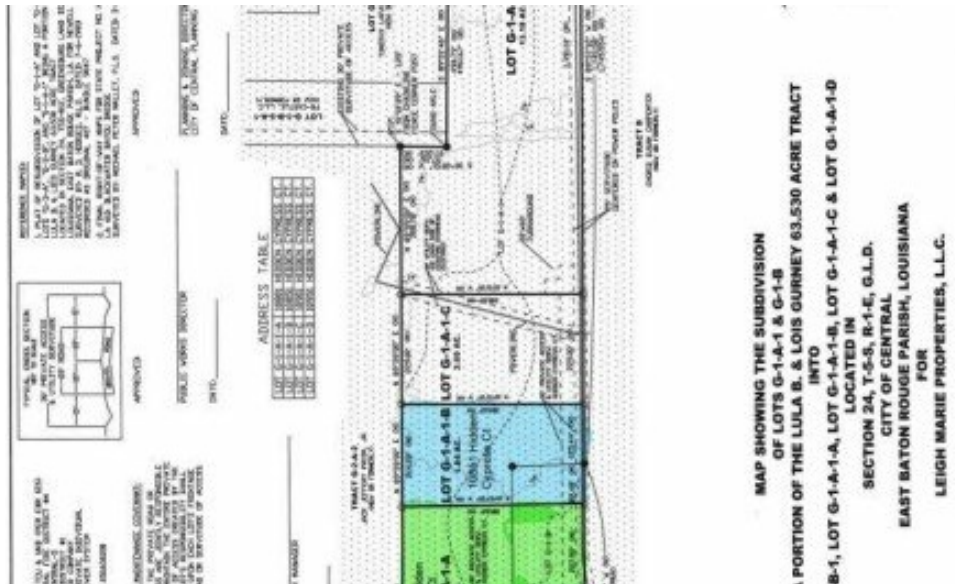


10801 Hidden Cypress Ct
Central, LA 70791

 **LOGO** COMING SOON

Powered by homes.theadvocate.com

MLS# 2024016946



\$153,000

Nestled in the heart of the Central School District, this 3.36-acre property offers the perfect blend of rural tranquility and convenient access to everything you need. This expansive lot is a blank canvas, ready for you to create your dream home or retreat. Whether you envision a cozy cabin, a modern farmhouse, or a sprawling estate, the possibilities are endless. The wooded terrain offers a natural buffer from the outside world, ensuring your peace and quiet. Despite its secluded feel, this property is just a short drive from local schools, shopping, dining, and entertainment options. You'll enjoy the best of both worlds a private, rural lifestyle with all the conveniences of city living close by. Don't miss this opportunity to own a piece of paradise in Central. 1.84 Acres available next to this lot as well! Worried about it being in a flood zone? Check out the steps you can take when building to get a LOMA- <https://www.fema.gov/flood-maps/change-your-flood-zone/loma-lomr-f>



Heather Prisk
Phone: (225) 588-1883
Rivers Edge Holdings, LLC

For full listing details, please scan:

