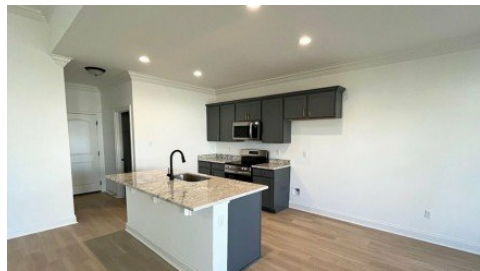


288 Sucrose Drive
Thibodaux, LA 70301



Powered by homes.theadvocate.com

MLS# 2024015248



\$275,550

4 Bedrooms | 2 Bathrooms | 1,935 Sqft

Awesome builder rate and FREE front gutters (restrictions apply)! The ROCHELLE V B in Imperial Landing community offers a 4 bedroom, 2 full bathroom, open design. Upgrades for this home include luxury vinyl plank flooring and more! Features: double vanity, garden tub, separate shower, and walk-in closet in the primary suite, double vanity in the second bathroom, a kitchen island overlooking the living room, large walk-in pantry, covered front porch, covered rear patio, recessed can lighting, undermount sinks, cabinet hardware throughout, ceiling fans in the living room and primary bedroom are standard, smart connect wi-fi thermostat, framed mirrors in all bathrooms, smoke and carbon monoxide detectors, post tension slab, automatic garage door with 2 remotes, landscaping, architectural 30-year shingles, flood lights, and more! Energy Efficient Features: a tankless gas water heater, a kitchen appliance package, low E tilt-in windows, and more!



Saun Sullivan
Phone: (225) 369-6111
Cicero Realty, LLC

For full listing details, please scan:

