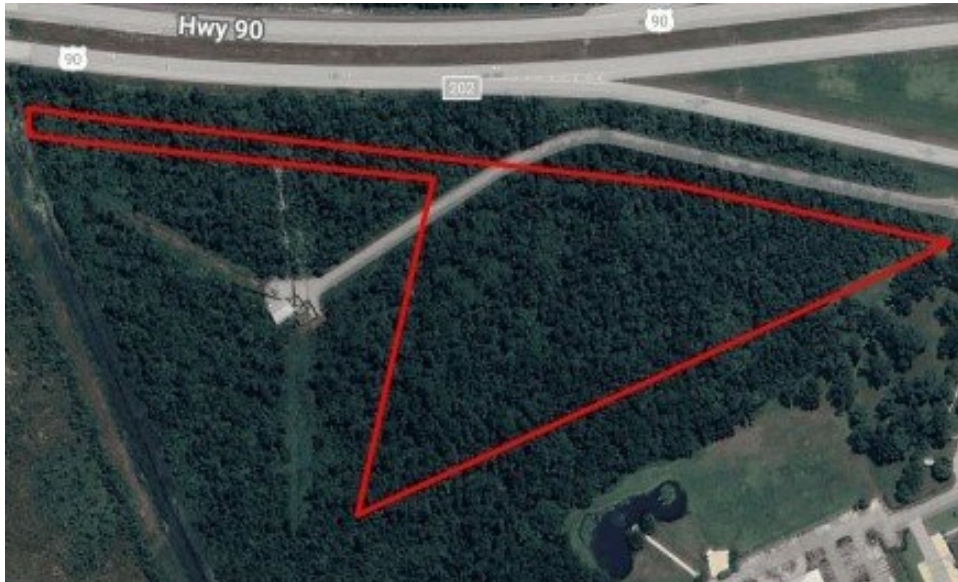


**305 A Frontage Rd**  
Gray, LA 70359

 **LOGO** COMING  
SOON

Powered by [homes.theadvocate.com](https://homes.theadvocate.com)

**MLS# 2025001577**



**\$725,000**

Approximately 24.2 acres located along the Southwest service road from LA Highway 24 off of US Highway 90 (Future I49). This irregular shaped tract is behind the Houma-Terrebonne Convention & Visitor's Bureau and Welcome Center and is accessed from Frontage Road and Tourist Drive. This property is an assemblage of three properties owned by family members. It includes assessment nos. 5578, 6987 and 4760. Additional adjacent businesses are a mixture of medical, franchises, and governmental services: Southeast Neuroscience Center, Headache & Pain Center, Popeyes, Danos, Cardiovascular Institute of the South, Tractor Supply, Burger King, Taco Bell, LA State Troop C, H. L. Bourgeois High School and a branch of the Terrebonne Parish Library. This listing is one of three from the same sellers on the NW, NE and SW corners of US Highway 90 and LA Highway 24. See Photos.



**Hank Babin**

Phone: (985) 804-9991

**KELLER WILLIAMS REALTY BAYOU P**

For full listing details, please scan:

