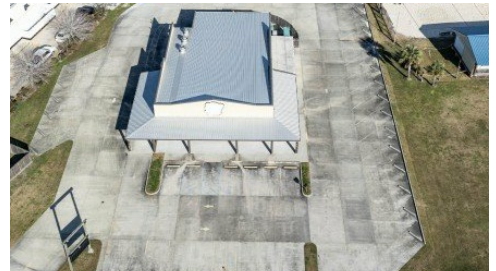


730 Corporate Drive
Houma, LA 70360

 **LOGO** COMING
SOON

Powered by homes.theadvocate.com

MLS# 2025002456



\$1,450,000

5,448 Sqft

Recently built 5,003 SF meat market/restaurant on 1.059 acres located just off of Martin Luther King Blvd. in Houma, the retail corridor serving 4 Parishes and the center of Terrebonne. The building was opened in 2018 and features 1,923 SF of shop/seating area, 2,017 SF of kitchen and prep areas, 445 SF of office space with private restroom, a 324 SF smoke room, plus 294 of other SF. There is even 1,852 SF of covered outdoor area not included in GBA. 28,816 SF of concrete parking and drive-thru (38 parking spaces). Natural gas generator for no business disruption.



Melanie Rogers Bruce

Phone: (985) 790-9205

KELLER WILLIAMS REALTY BAYOU P

For full listing details, please scan:

