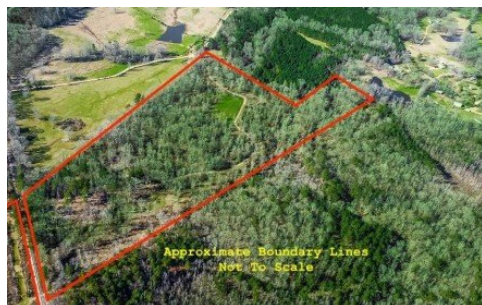


**Tbd Seale Road**  
Roxie, MS 39661



Powered by [homes.theadvocate.com](https://homes.theadvocate.com)

**MLS# 2025003188**



**\$275,000**

Discover the ultimate Franklin County hunting and recreational paradise on 66 acres nestled off Morgan Fork Church Lane NW in Roxie, MS. This property is turnkey and ready for adventure, featuring a well-maintained road and trail system, established food plots, and a diverse mixture of timber and cutover, creating ideal wildlife habitat and bedding areas. Enjoy the convenience of multiple outbuildings for equipment and storage, including one with a full bathroom. A pond and a creek provide natural water sources, enhancing the land's appeal for both wildlife and recreation. The property also boasts an RV cover with a spacious wooden deck, perfect for unwinding and taking in the tranquil surroundings. A fifth-wheel camper, just over a year old, is also available for purchase at a discounted rate. Don't miss this rare opportunity to own a private retreat with everything you need for hunting, recreation, or weekend getaways! Call today for more details! \*Lot dimensions not warranted by Realtor.



**Aaron Goolsby**

Phone: (225) 571-4149

Covington & Associates Real Estate, LLC

For full listing details, please scan:

