

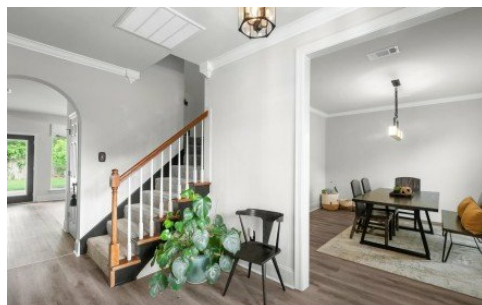
662 Wheatsheaf Dr
Baton Rouge, LA 70810



LOGO COMING
SOON

Powered by homes.theadvocate.com

MLS# 2025007680



\$490,000

3 Bedrooms | 3 Bathrooms | 2,597 Sqft

A beautifully updated home in the desirable Windermere subdivision in the new St George area. The home offers both a formal dining room and breakfast area that flows into the large living room with plenty of natural lighting. The kitchen offers top of the line appliances, a pantry area with views of the back yard. The living room features a fireplace and extremely tall ceilings up to the second floor landing. The 3 bedrooms are upstairs and the master suite features a large updated bath and sitting area. The garage fits two vehicles and the home offers plenty of storage spaces throughout. This home is a perfect place for you and your family to call home. It s a must see!!!



Austin DeLaune
Phone: (225) 717-5304
Pennant Real Estate

For full listing details, please scan:

