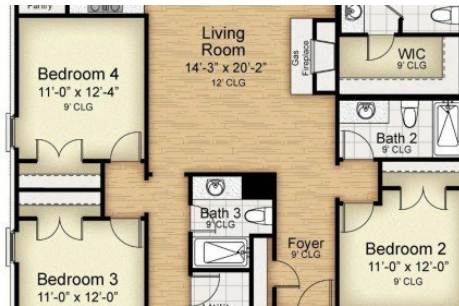


2920 Creekmere Ln
Saint George, LA 70810



Powered by homes.theadvocate.com

MLS# 2025009263



\$404,990

4 Bedrooms | 3 Bathrooms | 2,138 Sqft

Estimated completion: 08/21/2025 The Maple is a beautifully designed single-story home that perfectly balances spaciousness, functionality, and comfort. With 4 bedrooms, 3 full bathrooms, and a 2-car garage, this home offers room for the whole family and then some. At the heart of the Maple is an open-concept kitchen, dining, and living room with soaring 12-foot ceilings, ideal for entertaining or cozy family nights. The gourmet kitchen features a central island, walk-in pantry, and direct access to the breakfast nook, which opens onto a charming covered porch perfect for morning coffee or evening relaxation. The owner's suite is tucked away in its own private wing, complete with a spacious bathroom, separate tub and shower, and a walk-in closet. Three additional bedrooms are thoughtfully placed throughout the home, each with convenient access to full bathrooms. Additional highlights include a gas fireplace in the living room, a utility room with easy access from the garage, and ample storage throughout. Whether you're hosting guests or just enjoying a quiet day at home, the Maple is designed to grow with you and your lifestyle. Included Upgrades: LV2 LVP in primary Bedroom and Closet LV2 Gourmet Kitchen Upgrade LV1 Quartz countertops LV2 Urban tile backsplash Cabinets to ceiling LV2 rounded pulls (satin Nickel) Trash can pull



Carlos Alvarez
Phone: (225) 938-3306
Supreme

For full listing details, please scan:

