

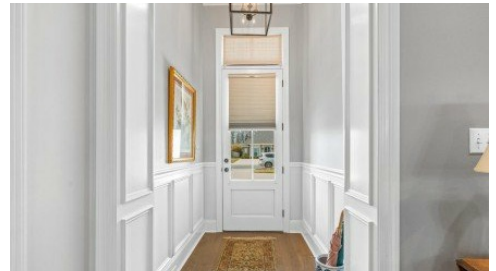
13120 Oakbourne Ave
Geismar, LA 70734



LOGO COMING
SOON

Powered by homes.theadvocate.com

MLS# 2025010994



\$498,500

4 Bedrooms | 3 Bathrooms | 2,259 Sqft

Motivated sellers will contribute \$7,500 closing costs with acceptable offer! This wonderful 2,259 sq ft, 4-bedroom, 3 full bath home with a whole home generator on a large 9,148 sq ft lot is waiting for you in a highly desirable gated community with a fully stocked pond at the entrance in Geismar/Dutchtown! Just a stone's throw from top Ascension Parish schools, Harvest grocery store, restaurants galore and an easy 20-minute drive to LSU. Stepping through the front door into the foyer, you are welcomed inside with handscraped plank wood floors and 12 ceilings. Builtins surround the gas-burning fireplace. The large family room has picture windows with 3.5 shutters that look onto the backyard, outdoor kitchen, and extended patio. The family room flows seamlessly into the kitchen which features a massive island with storage cabinets, ample space to food prep and a bar that's perfect for entertaining! The kitchen also features a 5-burner gas stove, pull-out drawers, a walk-in pantry and a dining area. Just off the kitchen is a flex space with built ins and a French door currently being used as an office, but that could be used as a study space for students, extended pantry or additional storage! The mud room leads to the mother-in-law suite and a full bath, so your family or friends have privacy when visiting. The primary suite is huge with a large



Terri Bond
Phone: (225) 241-6443
Clear Properties, LLC

For full listing details, please scan:

