

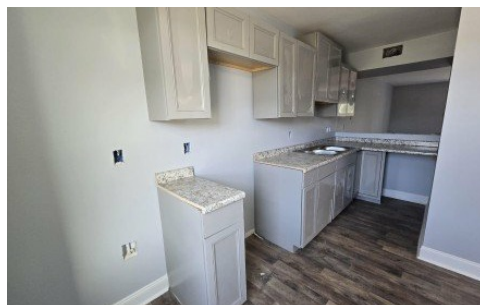
2015 Sherwood Meadow Dr
Baton Rouge, LA 70816



LOGO COMING
SOON

Powered by homes.theadvocate.com

MLS# 2025013364



\$450,000

4,520 Sqft

Investor Special Centrally Located Fourplex with Major Upgrades! Don't miss this rare opportunity to own a nearly-completed fourplex in a prime, centrally located area! This property is perfect for savvy investors seeking strong positive cash flow and long-term equity growth. Each unit has been thoughtfully updated with brand new windows, drywall, fresh paint, modern fixtures, durable flooring, and more! The hard work is done bring your vision and add the finishing touches to maximize rental income. Situated behind a secure gated entry, this property offers both privacy and peace of mind for future tenants. With its unbeatable location close to public transit, major freeways, shopping, and dining, tenant demand will be high year-round. Whether you're looking to expand your portfolio or house-hack by living in one unit and renting the rest, this property has incredible potential.



Carmen Coetzee

Phone: (337) 532-3653

Dawson Grey Real Estate

For full listing details, please scan:

