

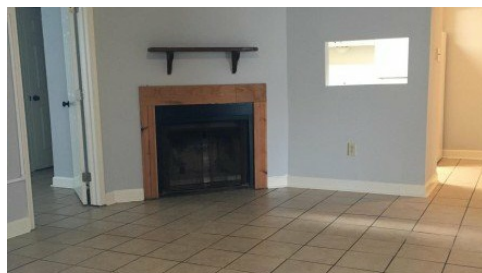
751 Hammond Manor Dr
Baton Rouge, LA 70816



LOGO COMING
SOON

Powered by homes.theadvocate.com

MLS# 2025013378



\$450,000

3,800 Sqft

Just off Old Hammond Hwy. This 4-plex can go VA, FHA, Conventional or of course "cash." It has a Great Location close to I-12/Just off O'Neal. Its also Great, in that it has a new roof, all brick, and freshly painted. This Four Plex has flat units with 2 BR/2 Bath. Each unit has W/D connections with a wood burning fireplace. The Bedrooms/bath are separated by the living area. Each Bedroom has a bay window area, its own bath and nice large walk-in closet. One of the bedrooms have 2 walk-in closets. The kitchen has all appliances. Potential buyer will be given showing of all units with accepted offer. Units can be viewed after an accepted offer to seller.



Sheila Goins

Phone: (225) 921-2427

RE/MAX Select

For full listing details, please scan:

