

**1976 Wooddale Blvd**  
Baton Rouge, LA 70806

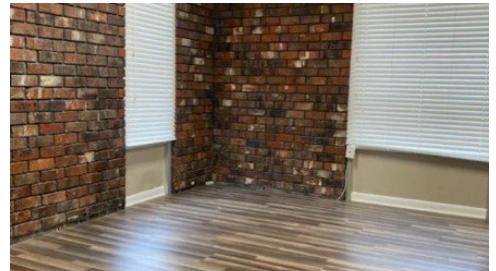
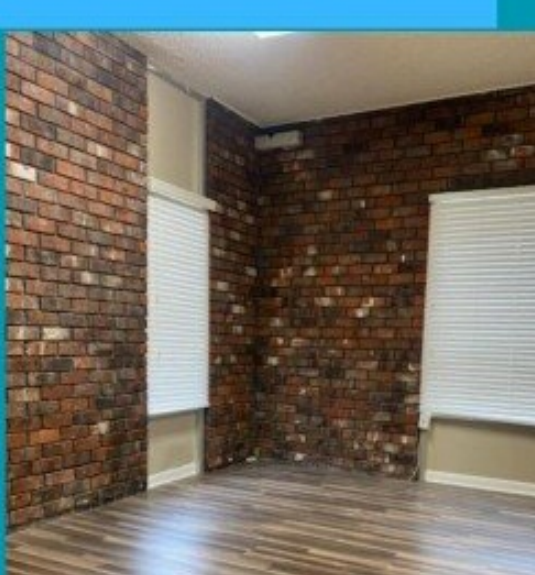


**LOGO** COMING  
SOON

Powered by [homes.theadvocate.com](https://homes.theadvocate.com)

**MLS# 2025013427**

12+ offices  
Convenient location  
Reception Area  
Front & Rear Parking  
Kitchenette - each floor  
2 bathrooms - each floor  
Separate rear entrances  
Sub-leasing allowed  
(with approval)



**\$3,000**

**3,990 Sqft**

Great location! Easy access to Florida Blvd and Airline Hwy. 2-story office building with reception area, 12+ office spaces/suites of varying sizes. Each floor has a kitchenette and 2 bathrooms. Top floor has direct access from the back of the building OR through the front reception area on the first floor. Both front and rear parking. Landlord will allow sub-leasing (with approval.)



**Charnel Webb Smith**  
Phone: (225) 202-2959  
Journey Home Realty LLC

For full listing details, please scan:

