

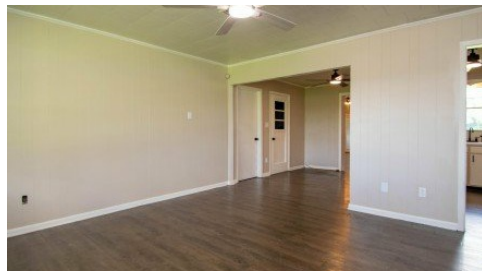
4606 Highway 182 Highway
Patterson, LA 70392



LOGO COMING
SOON

Powered by homes.theadvocate.com

MLS# 2025013547



\$235,000

3 Bedrooms | 2 Bathrooms | 1,642 Sqft

Nestled along the banks of Bayou Teche, this charming three bedroom, two bath home offers peace and tranquility in a beautiful, natural setting. With a fresh coat of paint throughout, a metal roof and a spacious yard, this property is perfect for those seeking comfort and calm. Enjoy your morning coffee as the sun rises or a glass of wine while watching the sunset from your private dock. This could be your forever home, it delivers the serene lifestyle you've been dreaming of.



Kim Haines

Phone: (985) 519-1111

ASSOCIATES OF PREFERRED REALTY

For full listing details, please scan:

