

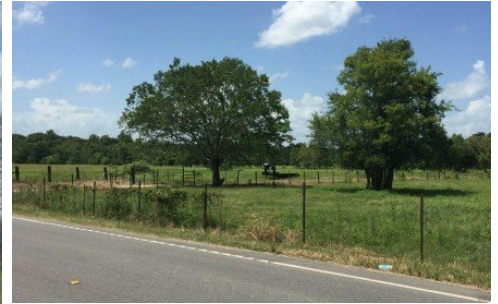
60018 Hwy 1148
Addis, LA 70710



LOGO COMING
SOON

Powered by homes.theadvocate.com

MLS# 2025013666



\$1,690,000

115 acre tract of land on the parish line between West Baton Rouge (111 acres in Addis) and Iberville Parish (4 Acres of frontage on Hwy. 1148 in Plaquemines). The property is currently zoned (and completely planned and permitted) for a large (327 unit) RV Park, which could still be developed with the appropriate buyer. Alternatively, it could easily be rezoned for either a single family home with sought after hunting land in the back yard, or a residential development. Livestock are currently being raised on the property, so please close and tie/chain all gates behind you during showings.



Adam Campo

Phone: (225) 505-2326

Adam Campo Real Estate, LLC

For full listing details, please scan:

