

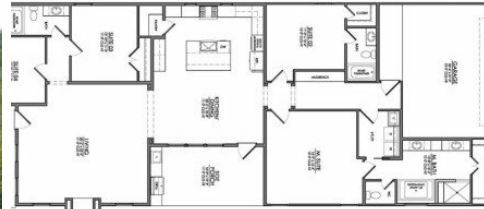
13906 Savannah Dr
St Francisville, LA 70775



LOGO COMING
SOON

Powered by homes.theadvocate.com

MLS# 2025014031



\$485,800

4 Bedrooms | 3 Bathrooms | 2,367 Sqft

Introducing the Kittridge A, a beautifully designed new construction home located in the popular Savannah Square subdivision in St. Francisville. This spacious 4-bedroom, 3-bathroom home offers a smart, functional layout with designer touches throughout perfect for modern living. Step inside to find an open-concept floor plan filled with natural light and elegant finishes. The kitchen is both stylish and practical, with custom cabinetry, sleek countertops, a large island for gathering, and quality stainless steel appliances making it a chef's dream and an entertainer's delight. The private primary suite offers a relaxing retreat with a luxurious en suite bath that includes a custom tiled shower, dual vanities, and a spacious walk-in closet. Three additional bedrooms provide space for family, guests, or a home office, along with a second full bathroom. Enjoy the outdoors on the covered back patio, and take advantage of the two-car garage and energy-efficient features built into every corner of this brand-new home. Don't miss your chance to own the Kittridge A in one of the area's most desirable new home communities. Schedule your showing today!



Larry Miller

Phone: (225) 281-1111

Keller Williams Realty Red Stick Partners

For full listing details, please scan:

