

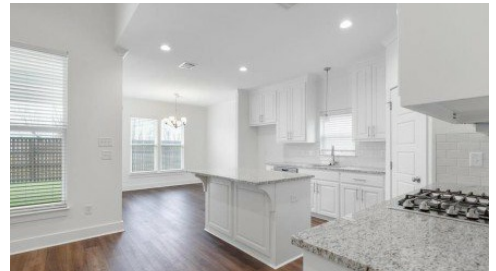
14436 Caroline Way
Saint George, LA 70810



LOGO COMING
SOON

Powered by homes.theadvocate.com

MLS# 2025014083



\$2,975

4 Bedrooms | 3 Bathrooms | 2,032 Sqft

BRAND NEW Construction Never occupied is now completed and ready for occupancy in this 4 Bedroom 3 Bath custom home in Woodstock Park. This Development is an exclusively built new home community in Baton Rouge by Alvarez Construction Company. Modern and contemporary meets traditional architecture with sleek electric lanterns unique to all new floor plans. As you enter the community you will be greeted with a large, beautiful lake. There are homesites with green spaces, sidewalks, curb and gutter. There is a private community pool and cabana for residents' enjoyment. Woodstock Park is located in south Baton Rouge off of Hwy 30. All homes include a Wi-Fi-enabled Smart Home management hub with a wireless security system and exterior security camera. This home has a Wi-Fi-enabled garage door, wireless smoke/heat combination detector and Wi-Fi-enabled thermostat. Visit the Build Smart area on our website to find additional smart home information. The Hemlock plan is a 4bed/3bath single story home offering open and spacious living areas with 12' high ceilings. Adjacent living and dining areas with wall of windows to back yard. LVT floors and oversized ceramic throughout with carpet in the bedrooms. Gourmet kitchen features keeping area, chef's island, GE stainless steel smart appliances, gas cooktop, separate wall oven



Darren St Amant

Phone: (225) 772-4369

RE/MAX Real Estate Group

For full listing details, please scan:

