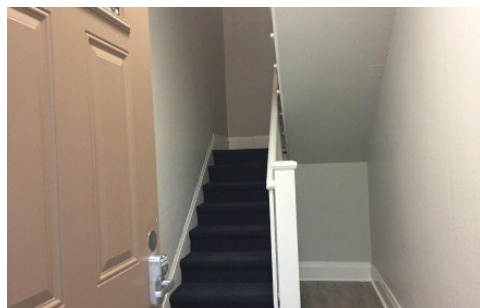


718 Park Blvd
Baton Rouge, LA 70806

 **LOGO** COMING
SOON

Powered by homes.theadvocate.com

MLS# 2025015270



\$1,550

2 Bedrooms | 1 Bathroom | 1,189 Sqft

One of Mid-City's most popular neighborhoods, The Garden District. This upstairs unit gives you a bird's eye view of Park Blvd from your private balcony. Proximity to City Park gives you access to tennis courts, golf, a Doggie Park and a bike trail around the City Park Lakes to LSU. You will enjoy the the ambiance of the refinished gleaming wood floors, high ceilings , slab granite and stainless



Kay Gilbert
Phone: (225) 933-5407
Century 21 Investment Realty

For full listing details, please scan:

