

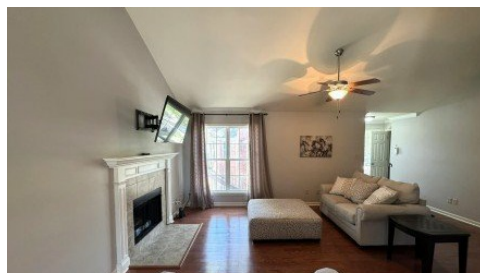
7441 N Jefferson Place Cir
Baton Rouge, LA 70809



LOGO COMING
SOON

Powered by homes.theadvocate.com

MLS# 2025016769



\$1,500

2 Bedrooms | 2 Bathrooms | 1,278 Sqft

Second-floor unit located at the rear of the complex, just steps from the playground and second pool. This home features spacious rooms, a Kitchen with a large island, abundant cabinet space, and a built-in desk area with access to the screened porch. The Living Room includes a vaulted ceiling, gas log fireplace, and walls of windows for plenty of natural light. The Primary Bedroom offers an en-suite bath with a vaulted ceiling, walk-in closet, and screened porch access. The community provides a fitness center, two pools, a playground, and beautifully maintained park-like grounds. Conveniently located in the heart of town near Towne Centre with quick access to both I-10 and I-12. Available NOW!



Michelle Copeland

Phone: (225) 803-7731

Parish & County Properties LLC

For full listing details, please scan:

