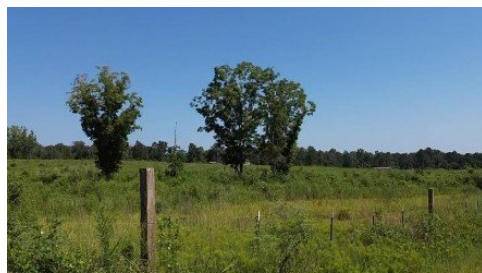
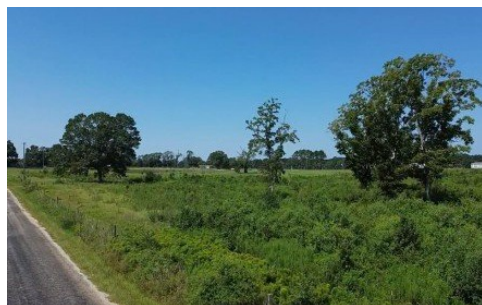


## Tract 4 Minnie Fortenberry Road Mt Hermon, LA 70450

 **LOGO** COMING  
SOON

Powered by [homes.theadvocate.com](https://homes.theadvocate.com)

**MLS# 2025016866**



**\$95,000**

Escape the hustle and bustle of city life and enjoy the freedom of 15.49 cleared and fully fenced acres in Washington Parish. Located in Flood Zone X with no restrictions, this property gives you the flexibility to create the homestead or small farm you've been dreaming of. Whether you envision raising animals, planting a garden, or simply enjoying wide-open space, the possibilities here are endless. With 500 feet of road frontage, you can build your home tucked away in the center of the property for maximum privacy and beautiful country views. Washington Parish is quickly becoming one of the most desirable places to settle down, offering a peaceful rural lifestyle within reach of modern conveniences. Offered at \$95,000 with 100% financing available to those who qualify, this property is a rare opportunity to own affordable acreage in a growing community. Don't wait schedule your visit today and see how this land can bring your vision to life!



**Ronnie White**

Phone: (225) 305-2353

South Haven Realty

For full listing details, please scan:

