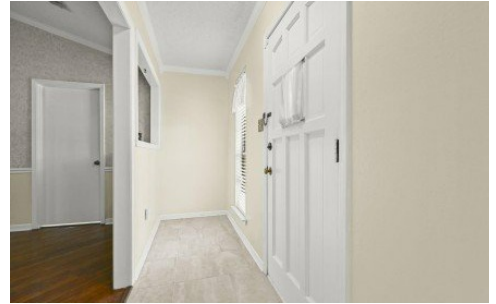


17619 Paladin Dr
Saint George, LA 70817



Powered by homes.theadvocate.com

MLS# 2025017025



\$224,900

3 Bedrooms | 2 Bathrooms | 1,539 Sqft

Step inside the large welcoming foyer that opens into a living room made for cozy nights and gatherings. The vaulted, beamed ceiling, warm wood flooring, and corner brick fireplace with wood mantle set the perfect tone stylish yet comfortable. The kitchen is the heart of the home, complete with a breakfast bar, flat-top electric range/oven, dishwasher, microwave, and a double stainless sink. Rich wood cabinetry ties it all together, and the open flow to the dining room makes entertaining a breeze. The primary suite is your private retreat, featuring a walk-in closet and a full en suite bath with a vanity plus a separate wet room with shower/tub combo. Out back, the living space continues! A covered patio leads to a double carport with attached storage perfect for extra hobbies. You'll also love the metal shed/shop, mature shade trees, and fully fenced backyard with both covered and open patio spaces for year-round enjoyment. This home blends classic charm with everyday functionality, and it's nestled in the highly desirable new City of St. George. Don't miss your chance to own this traditional beauty a place that feels like home the moment you walk in.



Jessica Huber

Phone: (225) 253-2800

Keller Williams Realty-First Choice

For full listing details, please scan:

