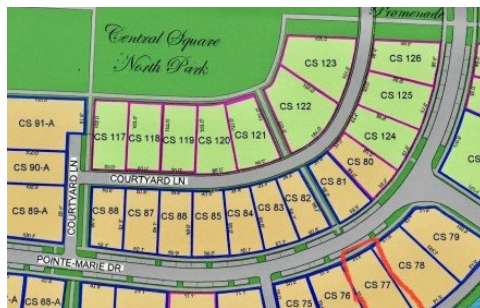


2828 Pointe-marie Dr
Baton Rouge, LA 70820

 **LOGO** COMING
SOON

Powered by homes.theadvocate.com

MLS# 2025017127



\$135,000

Premier lot in the prestigious Pointe-Marie subdivision featuring alleyway access bordering a pond. Whether you envision a charming cottage or a grand estate, this lot offers the perfect investment opportunity. Enjoy serene pond views, brick-paved streets, and pedestrian-friendly walkways, all set within a gated community. This neighborhood has it all - lush parks, a dog park, playgrounds, pavilions, gardens, and a refreshing community pool with a main cabana & 4 private cabanas. The Village Center is a hub for shopping, dining, entertainment, sports, and wellness that offers a lifestyle unlike any other. A calendar of neighborhood events, from Christmas on Pointe to the Wine & Art Walk and Spring Flower Fest, ensures there's always something to enjoy! No Flood Insurance Required! Situated only minutes from downtown Baton Rouge and LSU Tiger Stadium, this neighborhood is a dream for cycling enthusiasts with direct access to the River Road levee. Blending Louisiana's historic architectural traditions with modern innovation, Pointe-Marie offers a truly unique setting for your future home! Call today for more information! Point-Marie website for more information: <https://www.pointemarie.com/>



Rae Broussard

Phone: (985) 438-5555

Keller Williams Realty-First Choice

For full listing details, please scan:

