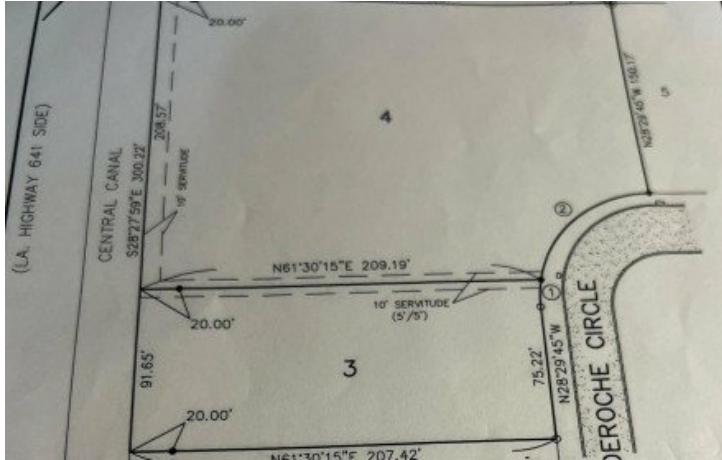


# Lot (3&4) Deroche Road Gramercy, LA 70052

 **LOGO** COMING  
SOON

Powered by [homes.theadvocate.com](https://homes.theadvocate.com)

**MLS# 2025017612**



**\$345,000**

Introducing a once-in-a-lifetime opportunity for visionaries and investors alike. Nestled just off Hwy 3125, lies a prestigious piece of cleared commercial land located in Deroche Commercial Subdivision. An excellent investment opportunity awaits. This property offers two large commercial lots sold together, providing ample space and high visibility for a wide range of business ventures. The two large adjoining commercial lots packaged together a prime corner lot with maximum exposure located directly off Highway 3125, offering easy access and strong traffic visibility. Ideal for retail, office, service, or mixed-use development. Plenty of land to accommodate the business of your dreams. This property combines size, location, and visibility making it a perfect choice for business owners or investors that are looking to establish a presence in a growing commercial area.



**Joan Harris-Tureaud**  
Phone: (225) 206-0999  
Pelican State Realty

For full listing details, please scan:

