

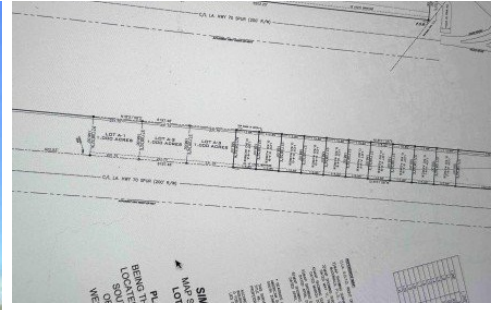
Lot A-4-a Hwy 70
Plattenville, LA 70393



LOGO COMING
SOON

Powered by homes.theadvocate.com

MLS# 2026007138



\$79,900

Prime commercial opportunity in the heart of Plattenville! Half Acre commercial lot on LA Highway 70 Spur offers excellent visibility in a high-traffic area ideal for a wide range of business ventures. Strategically positioned across from Rouses Market and Dollar General, this location provides built-in exposure and steady daily traffic. *** Additional opportunities available, including the adjoining One Acre parcel (on separate listing) and adjoining Nine half-acre parcels (on separate listings) perfect for expansion or development flexibility. Don t miss your chance to secure a prime commercial footprint in a growing area with strong visibility and access!



Scot Himel
Phone: (225) 647-7355
Scot Himel

For full listing details, please scan:

