

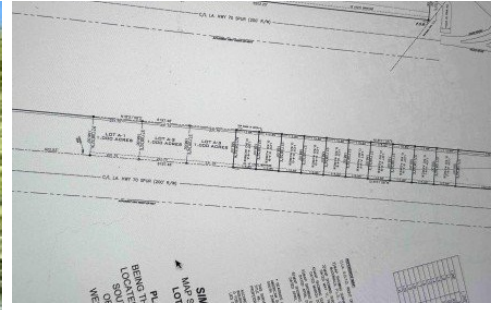
Lot #a-3 Hwy 70
Plattenville, LA 70390



LOGO COMING
SOON

Powered by homes.theadvocate.com

MLS# 2026007220



\$130,000

Prime commercial opportunity in the heart of Plattenville! These one-acre commercial lots on LA Highway 70 Spur offer excellent visibility in a high-traffic area ideal for a wide range of business ventures. Strategically positioned across from Rouses Market and Dollar General, this location provides built-in exposure and steady daily traffic. *** Additional opportunities available, including the adjoining ten half-acre parcels perfect for expansion or development flexibility. Don't miss your chance to secure a prime commercial footprint in a growing area with strong visibility and access!



Scot Himel
Phone: (225) 647-7355
Scot Himel

For full listing details, please scan:

