

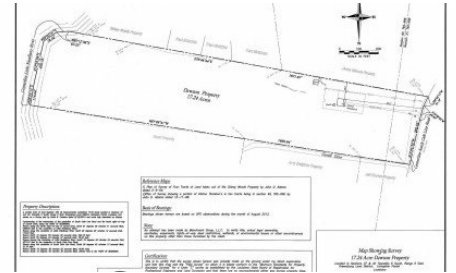
29809 S Cafe Line Rd
Albany, LA 70711



LOGO COMING
SOON

Powered by homes.theadvocate.com

MLS# 2026007611



\$330,000

2 Bedrooms | 1 Bathroom | 1,212 Sqft

17.24 Acres of Private Country Living and Waterfront - Room to Live, Build, & Expand in Livingston Parish! Escape the noise and step into your own private retreat with this beautiful home situated on 17+ acres in Livingston Parish. This picturesque farmland offers the rare combination of space, privacy, and flexibility - perfect for those looking to enjoy peaceful living, start a small homestead, or simply looking for room to grow. This home made mostly of cypress features a comfortable layout with inviting living spaces, updated throughout, and plenty of natural light. The kitchen features plenty of counter space, stainless steel appliances, a natural stone backsplash, and plenty of storage. The 14' x 28' workshop is fully equipped with electricity. Whether you're relaxing on the porch or exploring the acreage, this property delivers a tranquil sense of peace that is hard to find. You can even sometimes see deer and rabbits quietly roaming the land. Minutes from I-12 and Hammond, this quiet retreat offers you the best of both worlds - peaceful rural living with convenient access to everyday essentials. With over 17 acres you have room for horses or livestock, gardening and farming, recreational use, and even future expansion! Easy to add onto, you can live in this updated home while you build your dream home, or subdivide for an incredible investment opportunity.



Dawn Perry
Phone: (225) 571-4950
eXp Realty

For full listing details, please scan:

