

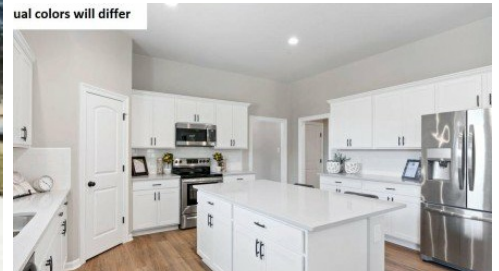
304 Sucrose Drive
Thibodaux, LA 70301



LOGO COMING
SOON

Powered by homes.theadvocate.com

MLS# 2026005976



\$289,970

4 Bedrooms | 3 Bathrooms | 2,072 Sqft

The FLEETWOOD III A in Imperial Landing community offers a 4 bedroom, 3 full bathroom, open design. Features: double vanity, garden tub, separate shower, linen closet, and walk-in closet in the primary suite, double vanity in the second bathroom, en suite bathroom in bedroom 4, a kitchen island, spacious walk-in pantry, covered rear porch, ceiling fans in the living room and primary bedroom are standard, smart connect wi-fi thermostat, post tension slab, landscaping, architectural 30-year shingles, flood lights, and more! Energy Efficient Features: a tankless gas water heater, a kitchen appliance package, low E tilt-in windows, and more!



Saun Sullivan
Phone: (225) 369-6111
Cicero Realty, LLC

For full listing details, please scan:

