

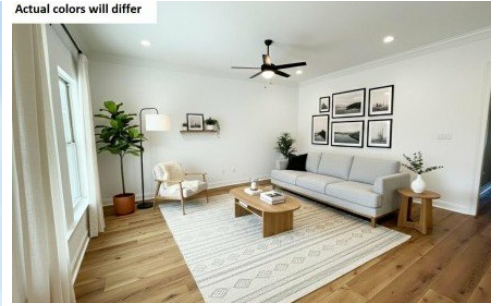
271 Sophie Dr
Houma, LA 70364



LOGO COMING
SOON

Powered by homes.theadvocate.com

MLS# 2026007179



\$270,305

3 Bedrooms | 2 Bathrooms | 1,825 Sqft

The TOWNSEND IV A in Parc Evangeline community offers a 3 bedroom, 2 full bathroom, open and split design. Features: double vanity, garden tub, separate shower, and walk-in closet in the primary suite, primary closet walks through to the laundry room for added convenience, kitchen island, walk-in pantry, mud room with boot bench, covered rear porch, ceiling fans in the living room and primary bedroom are standard, smoke and carbon monoxide detectors, post tension slab, landscaping, architectural 30-year shingles, flood lights, and more! Energy Efficient Features: a tankless gas water heater, a kitchen appliance package, low E tilt-in windows, and more!



Saun Sullivan
Phone: (225) 369-6111
Cicero Realty, LLC

For full listing details, please scan:

