

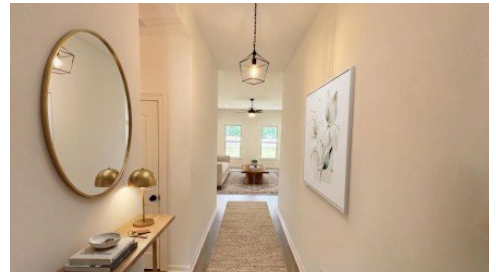
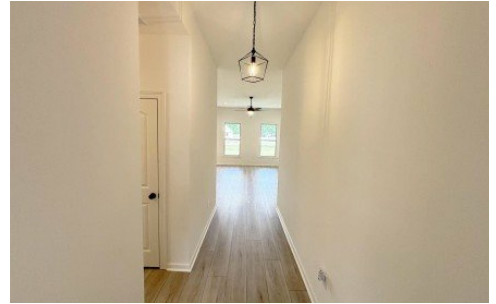
1422 Marshland Avenue
Gonzales, LA 70737



LOGO COMING
SOON

Powered by homes.theadvocate.com

MLS# 2026002021



\$274,370

3 Bedrooms | 2 Bathrooms | 1,564 Sqft

The BELHAVEN IV G in Cypress Garden community offers a 3 bedroom, 2 full bathroom, open and split design. Features: double vanity, linen closet, and a walk-in closet in the primary suite, walk-in closets in bedrooms 2 and 3, covered rear patio, ceiling fans in the living room and primary bedroom are standard, smart connect wi-fi thermostat, smoke and carbon monoxide detectors, post tension slab, landscaping, architectural 30-year shingles, flood lights, and more! Energy Efficient Features: a tankless gas water heater, a kitchen appliance package, low E tilt-in windows, and more!



Saun Sullivan
Phone: (225) 369-6111
Cicero Realty, LLC

For full listing details, please scan:

