

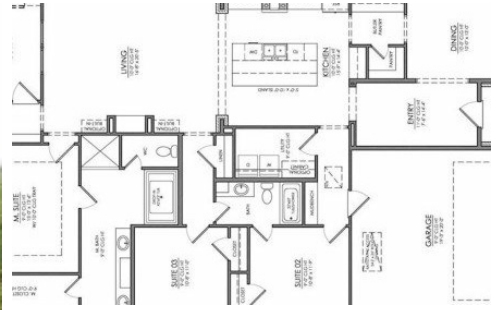
2519 Shore Side Avenue
Baton Rouge, LA 70810



LOGO COMING
SOON

Powered by homes.theadvocate.com

MLS# 2025022931



\$428,800

3 Bedrooms | 2 Bathrooms | 2,000 Sqft

Welcome to The Azalea B, a beautifully designed 3-bedroom, 2.5-bathroom home offering 2,000 square feet of living space in the exclusive Water's Edge community, nestled within Lexington Estates in Baton Rouge. This thoughtfully crafted home features an open-concept layout, perfect for modern living and entertaining. The gourmet kitchen seamlessly flows into the living and dining areas, creating an inviting space for gatherings. The private primary suite offers a serene retreat with a luxurious ensuite bath and a spacious walk-in closet. Additional highlights include a 2-car garage, energy-efficient features, and a covered patio ideal for outdoor relaxation. Residents of Water's Edge enjoy access to scenic lakes, green spaces, and a resort-style community pool and cabana. The community's prime location provides easy access to shopping, dining, and entertainment options along Nicholson Drive, just south of Bluebonnet Boulevard. Don't miss the opportunity to own this stunning new construction home in one of Baton Rouge's most sought-after communities. Schedule your private tour today!



Crystal Coppola

Phone: (225) 773-9239

Keller Williams Realty Red Stick Partners

For full listing details, please scan:

