

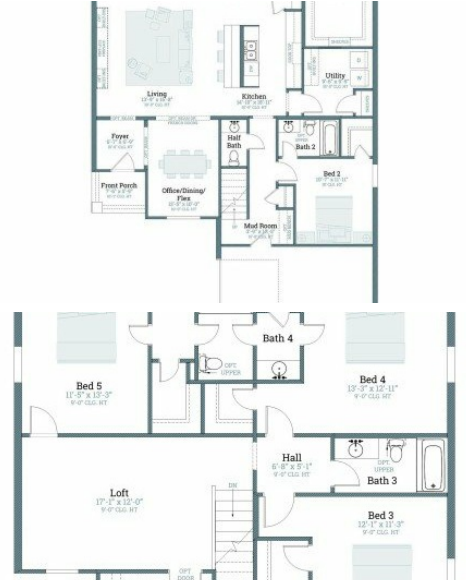
146 Sophia Drive
Luling, LA 70070



LOGO COMING
SOON

Powered by homes.theadvocate.com

MLS# 2026011296



\$484,655

5 Bedrooms | 4 Bathrooms | 3,059 Sqft

Vacherie B floorplan by Level Homes is underway in Heather Oaks! The Vacherie is a 2-story home featuring 5 bedrooms, 4.5 baths, a spacious loft and flex room. You won't have an ounce of wasted space as this home has a perfect layout and is very functional for a large and/or growing family! Enter the home from the covered front porch into the foyer which opens to the formal dining space and then into the large and open living, kitchen and breakfast room. The living room is centered around a vent-less gas fireplace with a quartz surround and milled mantle and has the option to add custom built-in wall units on both sides of the fireplace. The stunning kitchen features custom painted cabinets with 5 hardware pulls and under cabinet lighting, large center island with a 30 single basin stainless steel sink and overhanging pendant lights, 3 cm Cloud White quartz countertops, glossy White 3x12 subway tile backsplash, stainless appliances including a 30 gas cooktop with a single wall oven, built-in microwave, and a walk-in corner pantry! The master suite is located downstairs, off the rear of the home, with a spa-like bathroom featuring dual sinks with Cloud White quartz countertops, custom framed mirrors, separate soaking tub and custom tiled shower with a seamless glass shower door and a HUGE walk-in closet. There is an additional bedroom downstairs



Jennifer Waguespack
Phone: (225) 445-3274

Keller Williams Realty Red Stick Partners

For full listing details, please scan:

