

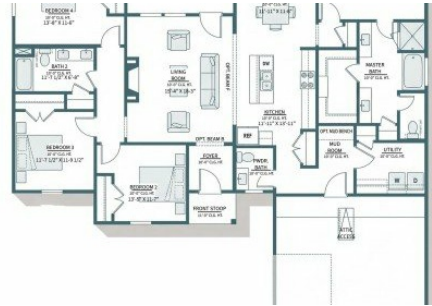
305 Sophia Drive
Luling, LA 70070



LOGO COMING
SOON

Powered by homes.theadvocate.com

MLS# 2026011298



\$398,765

4 Bedrooms | 2 Bathrooms | 2,045 Sqft

Stunning New Construction in Heather Oaks! Welcome to this beautifully designed 4-bedroom, 2.5-bathroom "Garland" floor plan built by Level Homes. Offering 2,045 square feet of pristine open-concept living space, this home perfectly balances high-end style with everyday functionality. Step through the welcoming foyer into an expansive living room featuring 10-foot ceilings and a cozy fireplace. The gourmet kitchen is a chef's dream, upgraded with Level 2 Carrara Luxe stone countertops, a sleek concrete-colored single-basin composite sink, an elegant Artisan tile backsplash, and premium brushed gold hardware and fixtures. Durable and stylish Khaki Luxury Vinyl Plank (LVP) flooring flows throughout the main living areas. The private primary suite serves as a true retreat, complete with a luxurious master bath boasting a seamless glass shower door, custom framed mirrors, Carrara Luxe quartz countertops and gorgeous brushed gold finishes. Three additional generously sized bedrooms provide plenty of space for family, guests, or a dedicated home office. Additional highlights include a spacious mudroom and utility area right off the oversized 2-car garage and an inviting rear porch which will be plumbed for gas grill and is perfect for outdoor entertainment. The yard will be professionally landscaped and fully sodded. Other lots and plans



Jennifer Waguespack
Phone: (225) 445-3274

Keller Williams Realty Red Stick Partners

For full listing details, please scan:

